

Алматы (7273)495-231	Иваново (4932)77-34-06	Магнитогорск (3519)55-03-13	Пермь (342)205-81-47	Тверь (4822)63-31-35
Ангарск (3955)60-70-56	Ижевск (3412)26-03-58	Москва (495)268-04-70	Ростов-на-Дону (863)308-18-15	Тольятти (8482)63-91-07
Архангельск (8182)63-90-72	Иркутск (395)279-98-46	Мурманск (8152)59-64-93	Рязань (4912)46-61-64	Томск (3822)98-41-53
Астрахань (8512)99-46-04	Казань (843)206-01-48	Набережные Челны (8552)20-53-41	Самара (846)206-03-16	Тула (4872)33-79-87
Барнаул (3852)73-04-60	Калининград (4012)72-03-81	Нижний Новгород (831)429-08-12	Саранск (8342)22-96-24	Тюмень (3452)66-21-18
Белгород (4722)40-23-64	Калуга (4842)92-23-67	Новокузнецк (3843)20-46-81	Санкт-Петербург (812)309-46-40	Ульяновск (8422)24-23-59
Благовещенск (4162)22-76-07	Кемерово (3842)65-04-62	Ноябрьск (3496)41-32-12	Саратов (845)249-38-78	Улан-Удэ (3012)59-97-51
Брянск (4832)59-03-52	Киров (8332)68-02-04	Новосибирск (383)227-86-73	Севастополь (8692)22-31-93	Уфа (347)229-48-12
Владивосток (423)249-28-31	Коломна (4966)23-41-49	Омск (3812)21-46-40	Симферополь (3652)67-13-56	Хабаровск (4212)92-98-04
Владикавказ (8672)28-90-48	Кострома (4942)77-07-48	Орел (4862)44-53-42	Смоленск (4812)29-41-54	Чебоксары (8352)28-53-07
Владимир (4922)49-43-18	Краснодар (861)203-40-90	Оренбург (3532)37-68-04	Сочи (862)225-72-31	Челябинск (351)202-03-61
Волгоград (844)278-03-48	Красноярск (391)204-63-61	Пенза (8412)22-31-16	Ставрополь (8652)20-65-13	Череповец (8202)49-02-64
Вологда (8172)26-41-59	Курск (4712)77-13-04	Петрозаводск (8142)55-98-37	Сургут (3462)77-98-35	Чита (3022)38-34-83
Воронеж (473)204-51-73	Курган (3522)50-90-47	Псков (8112)59-10-37	Сыктывкар (8212)25-95-17	Якутск (4112)23-90-97
Екатеринбург (343)384-55-89	Липецк (4742)52-20-81		Тамбов (4752)50-40-97	Ярославль (4852)69-52-93

Россия +7(495)268-04-70

Казахстан +7(7172)727-132

Киргизия +996(312)96-26-47

www.bb Braun.nt-rt.ru | | bng@nt-rt.ru

Технические характеристики на двухкомпонентные стомы, инструменты для ухода за стомой Flexima 3S, Flexima Key, Ally компании **B. BRAUN**

Виды товаров: плоские пластины, сумки для уростомы, дренажные мешки, выпуклые пластины, пасты, порошки, средства для удаления клея, мешки и др.

Ally®
Everyday Partner
Ostomy Accessories



Ally® Ostomy Accessories Everyday Partner

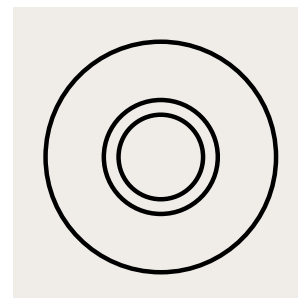
Every body shape is different. So is every stoma. The Ally® accessory range is designed to enable an even more personalized care of the individual stoma. Working hand in hand with the stoma bag, Ally® products can help to keep the ostomy appliance securely in place, to reduce leakage problems and to protect and care for the surrounding skin.

Ally® – your partner day by day.

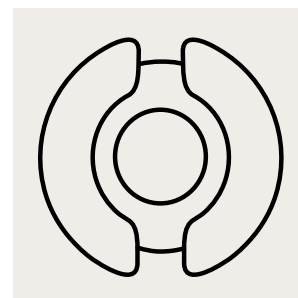




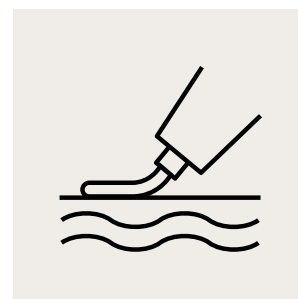
- 4 Ally® Rings
Ostomy barrier seal



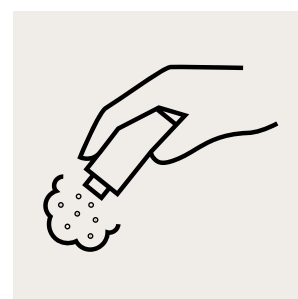
- 6 Ally® Wafer Extenders
Ostomy elastic barrier strips



- 8 Ally® Paste
Protective skin barrier paste without alcohol



- 10 Ally® Powder
Ostomy powder



Ally® Rings

Ally® Rings

Ostomy barrier seal

Ally® Rings are designed to create a flatter surface around the stoma by filling the cavities and folds. They are intended to prevent irritation, resolve leakage problems and secure the seal.

Ally® Rings are especially recommended for people who have skin dips or folds around their stoma. The rings are also adapted for people with lower dexterity.

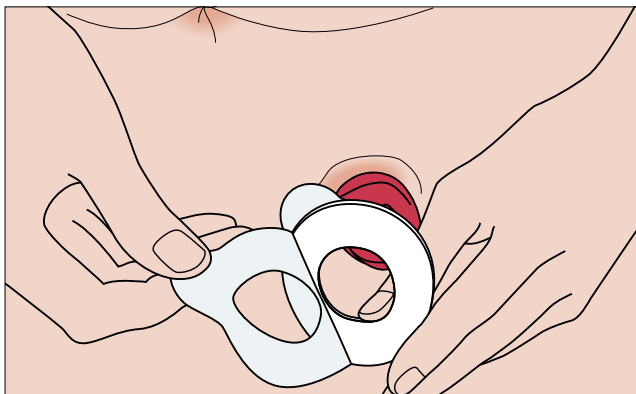
Thickness	Diameter	Quantity	Art.-No.
3 mm	48 mm	Box of 10	2022483
4.5 mm	48 mm	Box of 10	2022484
3 mm	98 mm	Box of 10	2022983



How to use

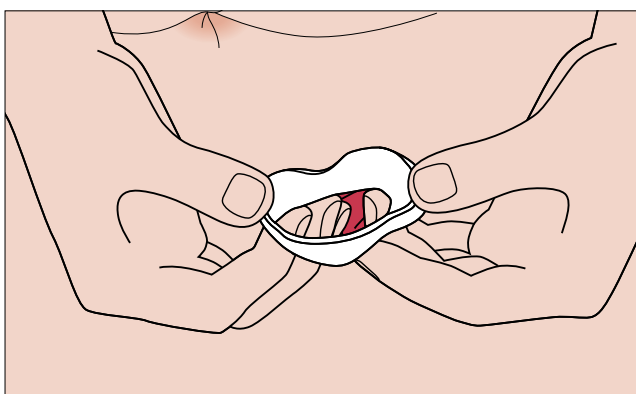


Ensure the skin around the stoma is clean and dry.

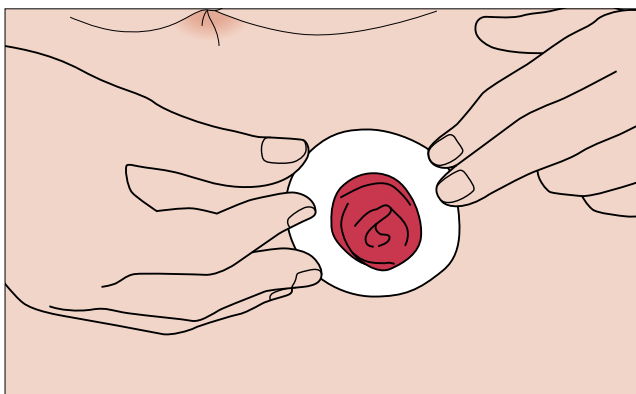


Remove the release paper.

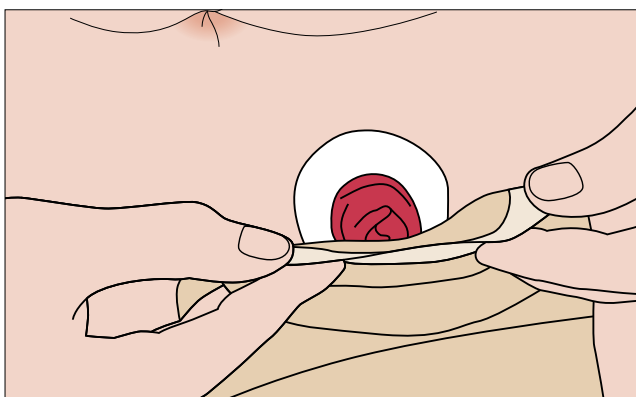
Adapted for low dexterity:
release paper easy to remove
because of its offset tabs.



Mold the ostomy ring by gently
teasing and stretching it into shape
to suit your body.



Place the ring around your stoma.
Smooth gently with wet fingers if
you need to adjust the shape of the
ring and for better adhesion to the
skin. Flatten the outer edge of the
seal.



Place the stoma pouch over the
seal, align the center of the wafer
with the center of the ring to
ensure a good fit.

Please read the instructions for use carefully before using the product.

Ally® Wafer Extenders



Ally® Wafer Extenders

Ostomy elastic barrier strips

Ally® Wafer Extenders are intended to reinforce adhesivity and keep the wafer securely in place for a longer wear-time. They are designed to follow body contours and movements.

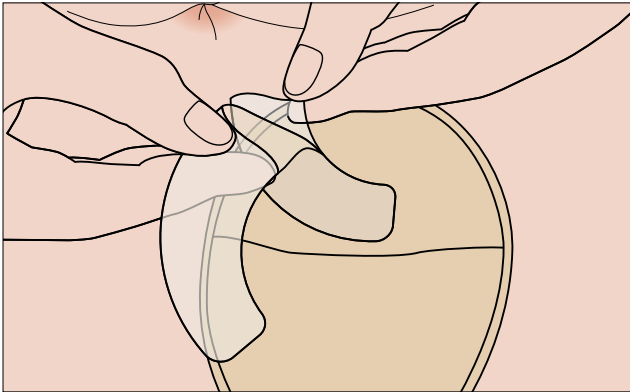
Ally® Wafer Extenders are especially recommended for people with stoma who have peristomal hernias, stomas that are prolapsed or in a difficult position, skin dips or bony prominences.

Quantity	Art.-No.
Box of 20	2022300

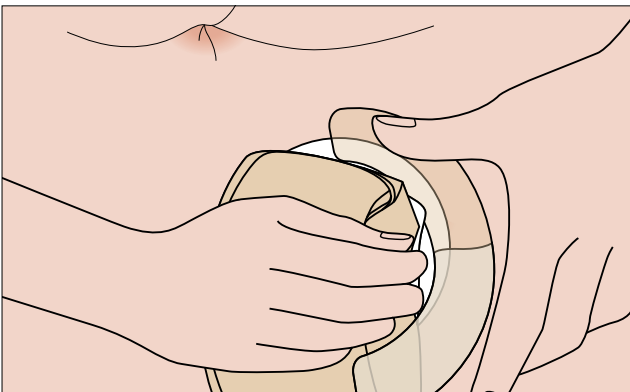
How to use



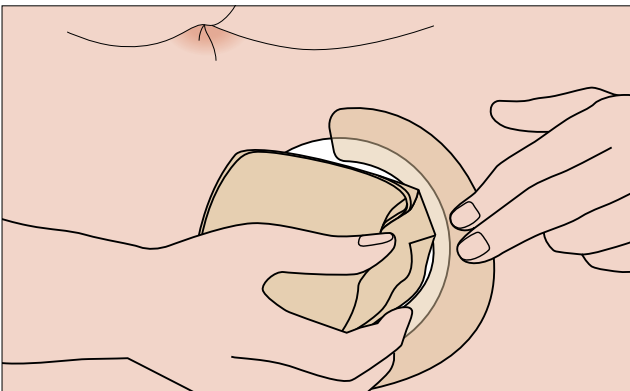
Ensure the skin around the stoma is clean and dry.



Remove half of the protective film.



Apply the wafer extender to the skin, overlapping the edge of the wafer. The wafer extender should overlap the edges of the wafer by at least half an inch.



Remove the remaining protective film and smooth down to aid adhesion.

Proceed the same way on the other side.

Please read the instructions for use carefully before using the product.

Ally® Paste



Ally® Paste

Protective skin barrier paste without alcohol

Ally® Paste is intended to fill in folds and creases in the intact skin around the stoma. It is designed to reduce the risk of leakage, protect the skin from effluent and may help to extend the wear-time.

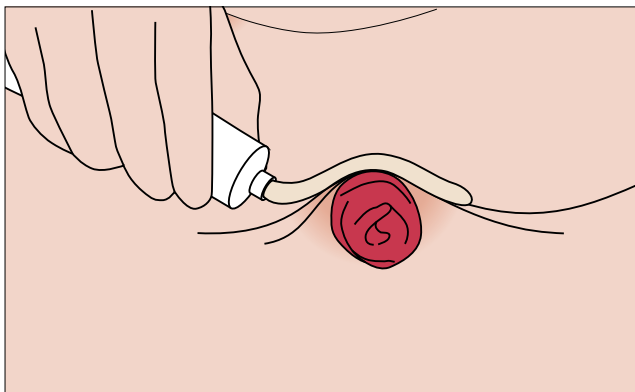
Ally® Paste is especially recommended for people who have skin dips or folds around their stoma.

Quantity	Art.-No.
Tube of 80 g	2022200

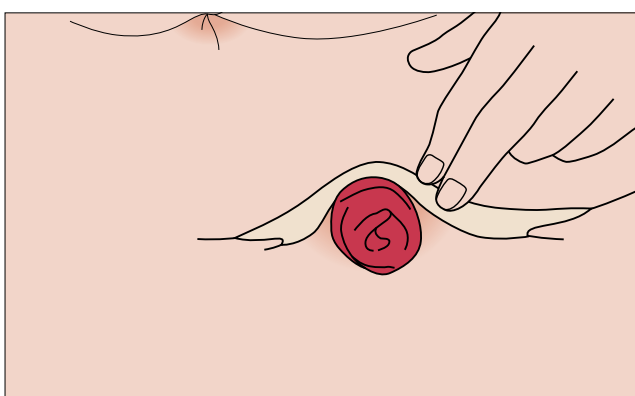
How to use



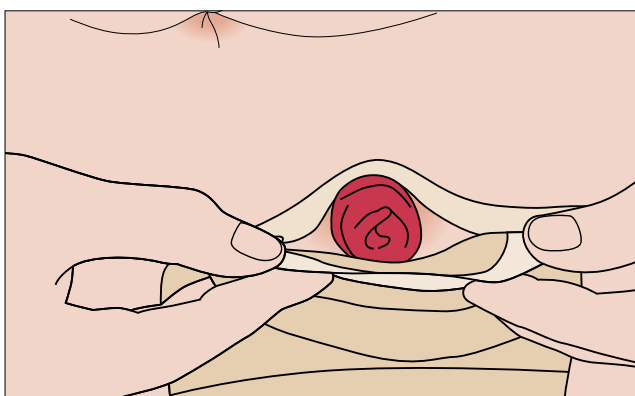
Ensure the skin around the stoma is clean and dry.



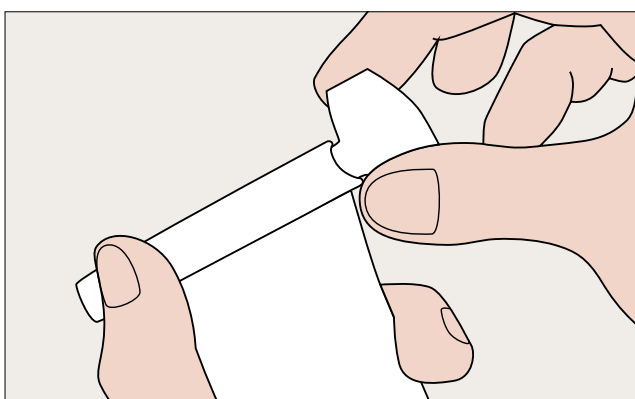
Apply the paste directly from the tube onto the skin. It can also be applied directly onto the wafer. Do not apply paste on the entire adhesive area.



If needed, smooth the paste using moistened finger, swabs or tissue.



After applying the wafer, ensure a good fit around the stoma by pressing the wafer with your fingers. Remove the residual paste on the tube with a clean tissue. Recap the tube tightly to prevent contact with moisture.



Use the tube squeezer to easily empty the tube.

Please read the instructions for use carefully before using the product.

Ally® Powder



Ally® Powder

Ostomy powder

Ally® Powder is designed to absorb moisture on the peristomal skin around the stoma to keep it dry. It is intended to protect the skin, reduce irritation and allow better stoma bag adhesion. The powder can promote the healing processes of irritated skin.

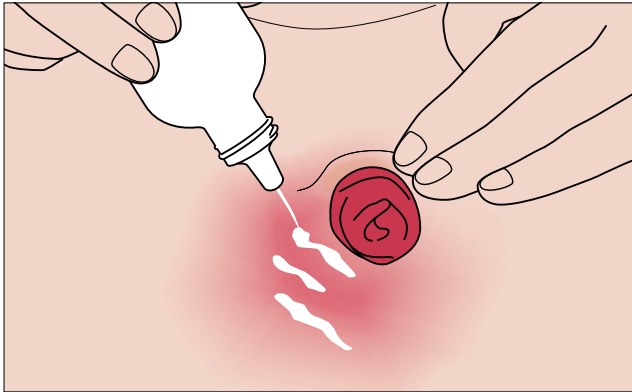
Ally® Powder is especially recommended for people with stoma who have reddened, sore or irritated skin.

Quantity	Art.-No.
Bottle of 28 g	2022100

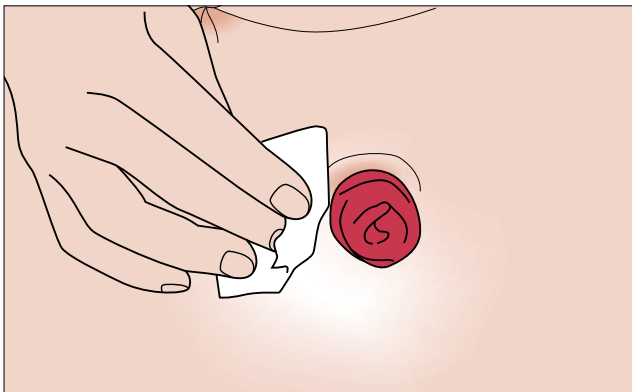
How to use



Ensure the skin around the stoma is clean and dry.



Unscrew the cap, aim the bottle nozzle at the skin that needs to be taken care of and gently shake the bottle to apply an appropriate amount of powder onto the skin around the stoma.



Spread the powder evenly with a tissue. Remove the excess powder before applying the adhesive wafer of the bag.

Please read the instructions for use carefully before using the product.

With nearly 50 years of active involvement in ostomy care, we support people with stoma with safe and easy-to-handle ostomy bags and accessories and offer tailored services within a holistic approach.



B. Braun Adhesive Remover

Helps to remove stoma appliances

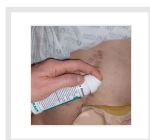


B. Braun Adhesive Remover



B. Braun Adhesive Remover

B. Braun /



B. Braun Adhesive Remover helps to remove your stoma appliance.

Features

- Does not sting when applied*
- Alcohol free
- Preserves skin integrity*
- Helps to remove of the adhesive and minimizes the negative impact on the skin*

Advantages thanks to the bag-on-valve technology:

- **Safe & pure:** material & propellant are separated
- **Practical:** can be used with the canister in any position and stored horizontally without leakage
- **Environmental benefits:** uses an eco-friendly propellant, nitrogen, and is fully recyclable
Discreet: spray is quiet to use
- **Discreet:** spray is quiet to use
- **Long shelf life:** 3 years, substances contained by a four layer vacuum bag
- **Economic:** no waste, and can be used until the cannister is completely empty

Composition:

- 100% Siloxanes (HMDSO)

Indication

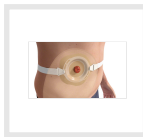
For fast and painless removal of medical adhesives from skin surfaces.

B. Braun Stoma Care Belt

Stoma Care accessories



B. Braun Stoma Belt



B. Braun Stoma Care Belt

The B. Braun Stoma Care Belt is a latex free, user-friendly and secure belt used to fix:

- The B. Braun convex 1-piece bags
- The B. Braun 2-piece wafers

Dimensions: 120 cm (length), 4 cm (width), 2,5 cm (height)

Using the belt will help you to feel more secure.

Indication

For additional fixation of the convex 1-piece bags or 2-piece bag systems.

Clamp for drainable stoma bags

Reusable small clamp



Clamp for Proxima® drainable bags

Reusable clamp for drainable Proxima® and Proxima® 2 stoma bags.

Disposal bags for stoma bags



Disposal bags

Disposal bags to discard discreetly your ostomy bags.



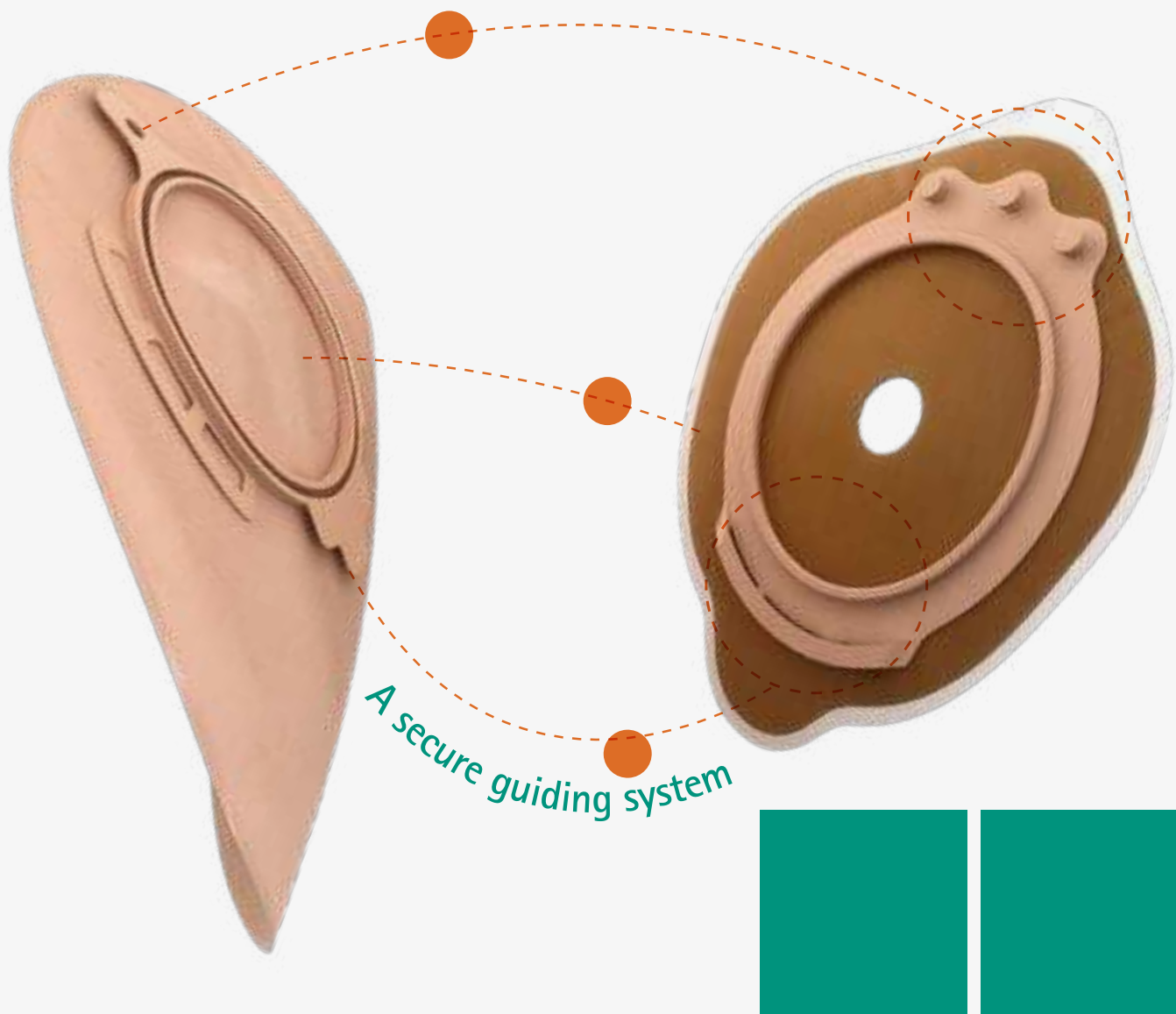
2-piece system

FLEXIMA® 3S

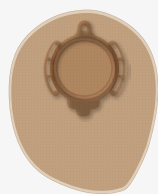
LATEST GENERATION OF MECHANICAL COUPLING SYSTEM

Flexima[®] 3S

As simple as it gets



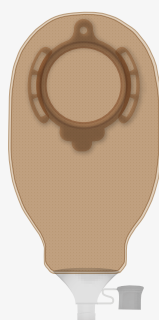
A complete range to fulfill each patient's needs**



Closed bag



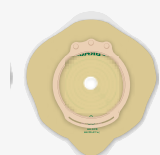
Drainable bag with
integrated soft
Roll'Up clamp



High-Flow bag



Uro bag



Flat and convex
wafers

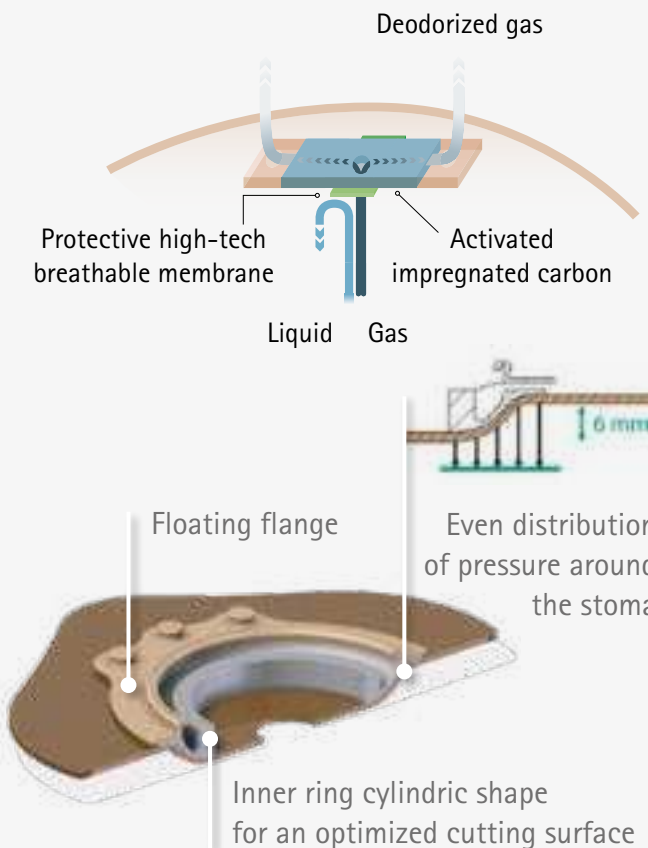
*French survey 2013 Post Market Surveillance.

**Availability may vary depending on the country.

Flexima[®] 3S

A secure range

High performance filter



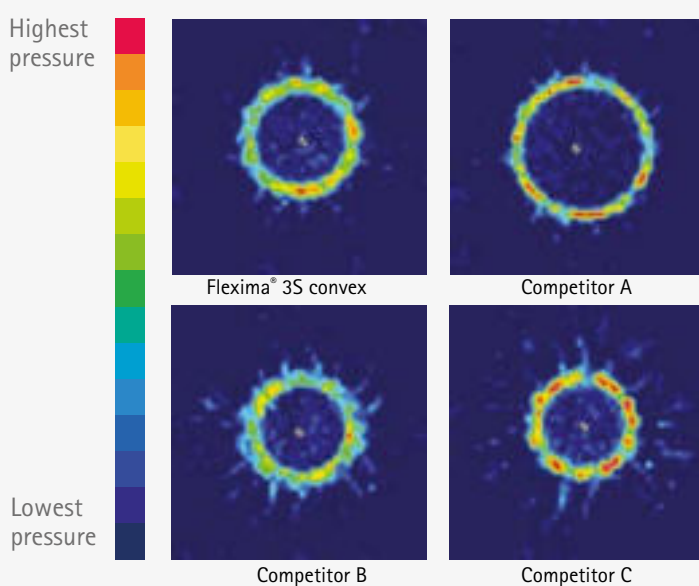
- Leak-Proof and permeable to gases high-tech breathable membrane

Flexima[®] 3S wafer

- Largest diameter available in flat: 80mm
- 6mm convexity with a large base

Pressure Mapping* of 2-piece convex wafers

Flexima[®] 3S convex wafer has been designed to provide a sufficient level of pressure, evenly spread out on the peristomal area.



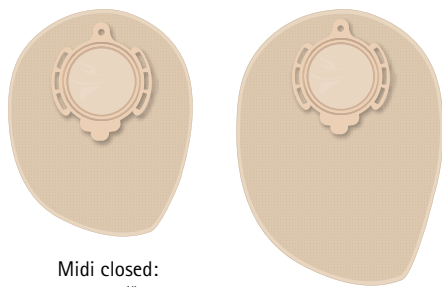
*Source: R&D data on file Test Report CR0663 (May 2014).

Flexima[®] 3S

Closed and drainable Roll'Up bags

Compact shape for more discretion

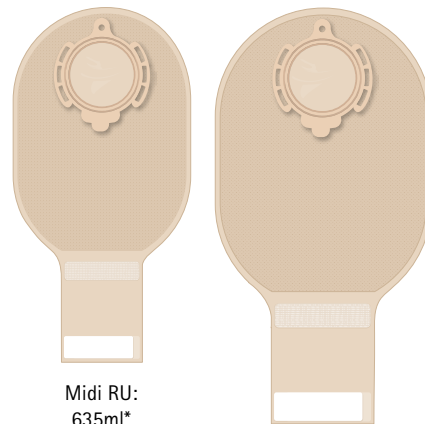
Closed bags



Midi closed:
500ml*

Maxi closed:
655ml*

Drainable Roll'Up bags

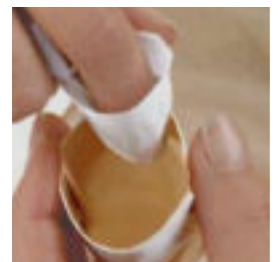
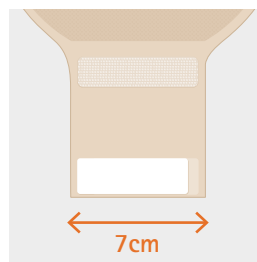
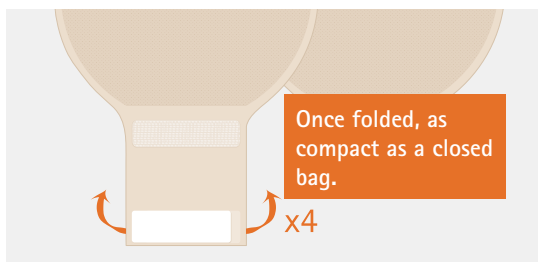


Midi RU:
635ml*

Maxi RU:
785ml*

Integrated soft Roll'Up clamp

Intuitive and secure closing system



○ Soft edges

○ A large 7cm outlet for both colostomates and ileostomates

○ White opening tabs

*for diameter 55mm.

Flexima[®] 3S

High flow bag



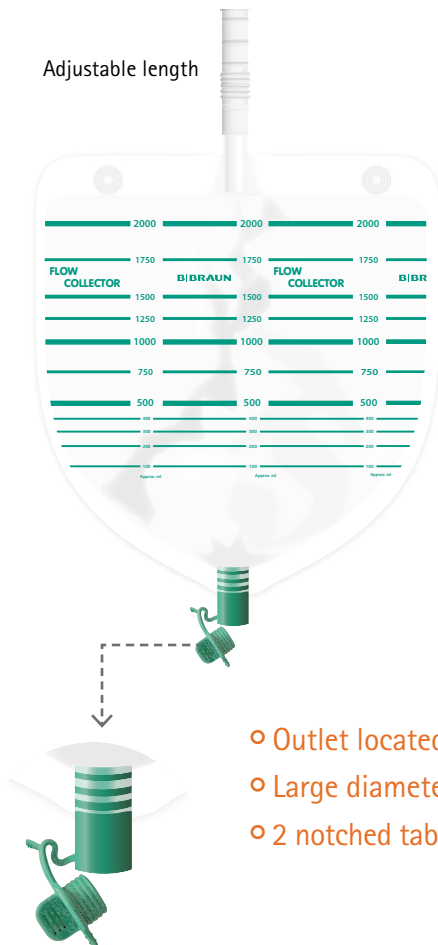
High capacity bag

- Compact shape
- Large funnel outlet for direct flow: Ø13.3 mm
- Large diameter of the outlet for a direct connection to the Flow Collector bag

Both High-Flow outlet and Flow Collector bag have been specifically designed together to provide a safe answer to high-output indications and an easy to handle system.



Adjustable length



Flow Collector

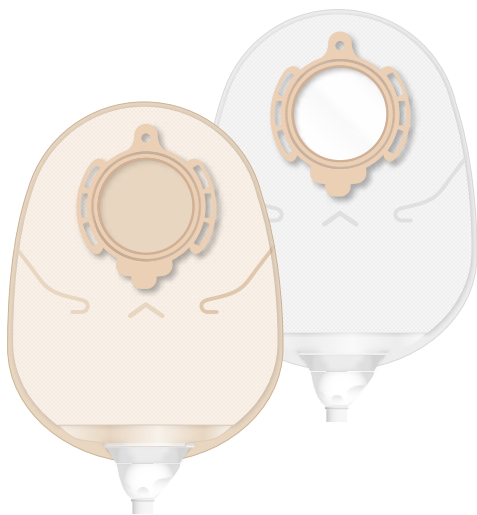
- Compact shape with a 2 liter capacity
- White back cover
- White opaque tube (1,5m)
- Printed approximative scale for a volume measurement
- Hooks available for hanging or attaching the bag

- Outlet located at the bottom of the bag
- Large diameter for an emptying of output including bits (20mm)
- 2 notched tabs available: one at the top and one on the side

Flexima[®] 3S

Uro bags

- Ergonomic & compact shape
- Anti-reflux valve
- Specific B. Braun tap



*Field Acceptance Test on panel of uro patients, France from September 2012 to January 2013.

Available in beige & transparent

« The system is extremely safe. It's easy to fit, no leakage between the wafer and the bag. The possibility to use a belt is very handy.
Enterostomal Therapist



A Secure outlet

OUTLET FOR DAY

- Position open/closed
- Fits in perfectly strengthened by a click and a final locking system
- Easy handle; no risk of wet fingers

OUTLET FOR NIGHT

- Click at connection
- Can be connectd to a night drainage bag
- Outlet designed to avoid bag twist



Closed



Open



Universal Connection



Capacity: 2L

Simple: it guides into position for you

Right positioning from the start

1. Insert the tab into the wafer slot
2. Clip the bottom of the ring and slide it up
3. Lock the pinpoint to secure the system

Minimum patient education required

Multiple orientation

« The guiding system will completely revolutionize the patient's life: the insertion of the guiding tab into the slot is very intuitive. No need to think twice!
Enterostomal Therapist



89%
very satisfied
or satisfied with
guiding system*

Secure: it gives you confidence!

Enhanced leak proofing

- Thanks to the close fitting mechanical coupling system

Increased security

- Strengthened by both the click and the final locking system

Optimal belt fixation

- Three hooks on the bag add stability when needed

« The system is extremely safe. It's easy to fit, no leakage between the wafer and the bag. The possibility of using a belt is very handy.
French Patient



84%
Secure feeling
during wear*

Soft: it becomes a part of you!

Minimum pressure on the abdomen

- The floating flange prevents discomfort during the application

High degree of comfort

- Flexible when wafer and bag are coupled together

Optimised body fit

- New generation of good plastic material allowing for great discretion

« It is simply perfect. It is flexible, as much as a 1-Piece system can be.
Enterostomal Therapist







91%
wearing comfort
(flexibility and
discretion)*




*French survey 2013 Post Market Surveillance.

Flexima® 3S




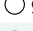


FLEXIMA® 3S FLAT - BOX OF 5

	Ø (mm)	References
	45/ 15-30	936415
	45/ 20	936420
	45/ 25	936425
	45/ 30	936430
	55/ 15-40	936515
	55/ 35	936535
	55/ 40	936540
	65/ 15-50	936615
	65/ 45	936645
	80/ 15-65	936815

FLEXIMA® 3S CONVEX - BOX OF 5

	45/ 15-26	937415
	45/ 25	937425
	55/ 15-36	937515
	55/ 30	937530
	65/ 15-46	937615



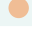



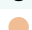




FLEXIMA® 3S HIGH FLOW - BOX OF 30

Size	Ø (mm)	References	Volume
Maxi	55	 933055	±970ml
		 933155	
	65	 933065	±940ml
		 933165	
	80	 933080	±900ml
		 933180	



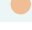










+ FLOW COLLECTOR®

039900	BOX OF 15	±2l
039901	BOX OF 5	±2l






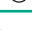
FLEXIMA® 3S CLOSED - BOX OF 30

Size	Ø (mm)	References	Volume
Midi	45	 931045	±520ml
	55	 931055	±500ml
	65	 931065	±465ml
Maxi	45	 931445	±665ml
		 931545	
	55	 931455	±655ml
		 931555	
	65	 931465	±630ml
		 931565	
	80	 931480	±510ml
		 931580	

FLEXIMA® 3S ROLL'UP - BOX OF 30

Midi	45	 932045	±650ml
		 932145	
	55	 932055	±635ml
Maxi	65	 932065	±615ml
		 932165	
	45	 932445	±805ml
		 932545	
	55	 932455	±785ml
		 932555	
	65	 932465	±755ml
		 932565	
	80	 932480	±715ml
		 932580	

FLEXIMA® 3S URO - BOX OF 30*

Midi	45	 934045	±675ml
		 934145	
	55	 934055	±635ml
		 934155	
	65	 934065	±620ml
		 934165	

*with 30 universal connectors



2-piece system

FLEXIMA[®] KEY

THE KEY TO FEELING SECURE WITH EXTRA FLEXIBILITY

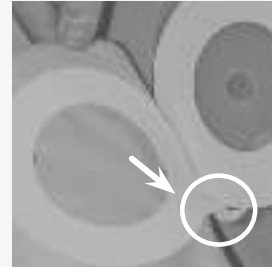
Flexima[®] Key

The guided positioning

A major step towards security

Key guided positioning

- Precise and simple positioning with a guiding system
- Minimum patient education: intuitive coupling



Key guiding system

Secured coupling system

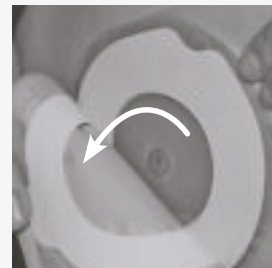
- Large stable track, no distortion.
- Specific adhesive foam formula



Bag fitting

Easy bag removal

- Special cut-away section at the top of the flange
- Bag ring leaves no residue when the bag is removed



Removal

Flexibility

Soft material for flexibility

- Follows body contours

Smooth and low profile track

Soft convexity

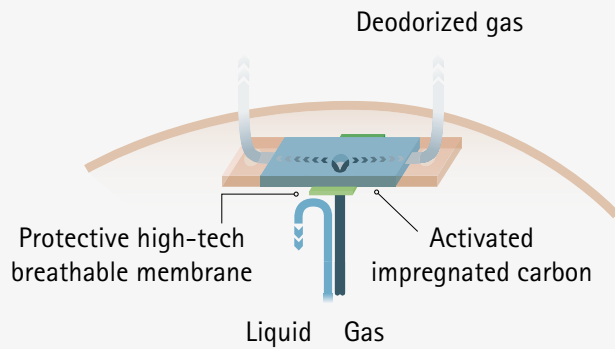
- For flush or slightly retracted stomas
- A belt can be used



Flexima[®] Key

Drainable Roll'Up bags

High performance filter



- Leak-Proof and permeable to gases high-tech breathable membrane

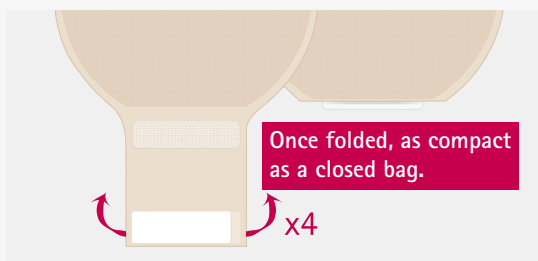


Shape and features

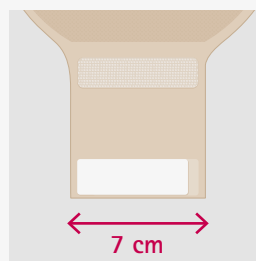
- Ergonomic shape
- Optimized sizing

Integrated soft Roll'Up clamp

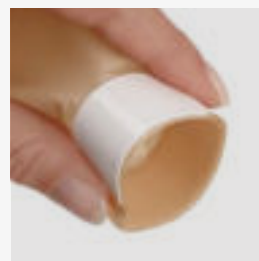
Intuitive and secure closing system



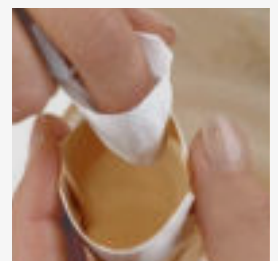
- Soft edges



- A large 7 cm outlet for both colostomates and ileostomates



- White opening tabs

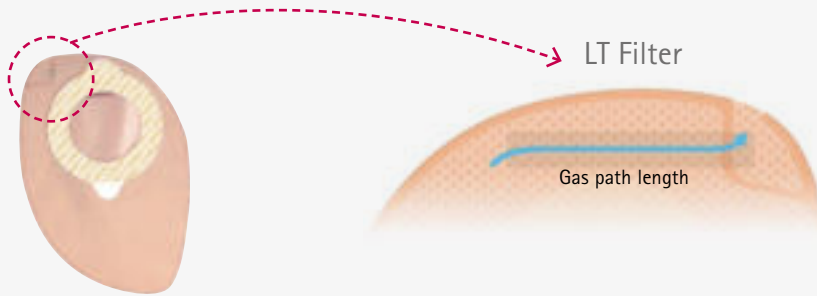


* for diameter 50mm
**for diameter 80mm

Flexima® Key

Closed, drainable and uro bags

Closed bag

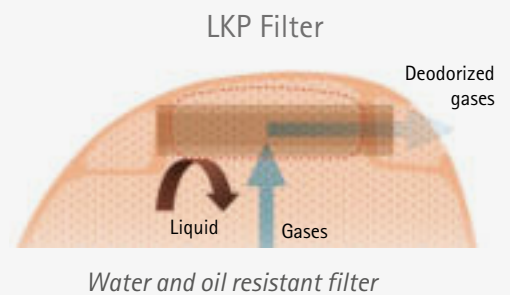


- **Laminar technology filter:**
- Optimized performance of degassing and deodorizing

Maxi drainable bag



- Funnel-shaped
- Large diameter direct connection to a Flow Collector bag
- Suitable for patients with low dexterity



Flexima® Key Uro



A Secure outlet **OUTLET FOR DAY**

- Position open/closed
- Fits in perfectly strengthened by a click and a final locking system
- Easy handle; no risk of wet fingers

OUTLET FOR NIGHT

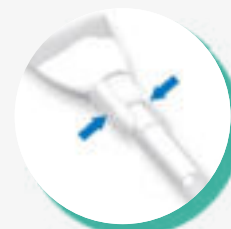
- Click at connection
- Can be connectd to a night drainage bag
- Outlet designed to avoid bag twist



Closed



Open



Universal Connection



Capacity: 2L

Flexima® Key

Right positioning – Fit from the start



Users very satisfied*

- Security feeling
- Comfort during wear

* Report on Flexima® Key
post-marketing user evaluation
– 2005



The key system is «idiot proof; always in the right spot»
Giny- ET nurse, Netherlands



Very easy to use for a lot of people»
Jos- ET nurse, Netherlands



*The Key is a good idea because the problem we're facing with this kind of product is being able to position it correctly.
With Key, you can't go wrong!»*
Isabelle- ET nurse, Netherlands

Flexima® Key

FLEXIMA® KEY FLAT

✂: BOX OF 5 / PRE-CUT: BOX OF 5

	Ø (mm)	References
✂	40/ 15-35	62040
✂	50/15-45	62050
✂	60/ 15-55	62060
✂	80/ 15-75	62080

FLEXIMA® KEY CONVEX

✂: BOX OF 5

✂	50/ 15-25	62052
✂	60/ 15-35	62062
✂	60/ 15-45	62063
	60/ 25	62064
	60/ 30	62066
	60/ 35	62067
	60/ 40	62069

FLEXIMA® KEY CLOSED - BOX OF 30

Size	Ø (mm)	References	Volume
Midi	40	● 62140	±440ml
		○ 62240	
	50	● 62150	±420ml
		○ 62250	
	60	● 62160	±550ml
		○ 62260	
	80	● 62180	±520ml
		○ 62280	

✂ Cut-to-fit | ● Beige | ○ Transparent

For most countries a specific letter is added at the end of the radical reference

FLEXIMA® KEY ROLL'UP - BOX OF 30

Size	Ø (mm)	References	Volume
Midi	40	● 621241	±550ml
		○ 621240	
	50	● 621251	±525ml
		○ 621250	
Maxi	60	● 621261	±670ml
		○ 621260	
	80	● 621281	±610ml
		○ 621280	

FLEXIMA® KEY URO - BOX OF 30*

Midi	40	● 62740	±580ml
		○ 62840	
	50	● 62750	±570ml
		○ 62850	
	60	● 62760	±570ml
		○ 62860	

*with 30 universal connectors

FLEXIMA® KEY MAXI DRAINABLE- BOX OF 30

Maxi	50	● 62550	±780ml
		○ 62650	
	60	● 62560	±730ml
		○ 62660	
	80	○ 62680	±655ml

FLOW COLLECTOR®

+	039900	BOX OF 15	±2l
	039901	BOX OF 5	±2l

Stomacare belt	References
1 unit	5028

Flow Collector

Distal collecting bag for enterostomates with high-output stoma



Flow Collector

Flow Collector

Flow Collector



The Flow Collector is a drainable distal collecting bag with long evacuation tubing for high flow liquid stools. Connected to the patient's stoma bag, this 2L collecting bag allows to increase the collecting capacity of high flow liquid stools.

Advantages

- Collecting bag:
 - Large capacity: no need to drain during the night
 - Punched holes at the top of the bag to hang it
 - Resistant white opaque backing material for more discretion
 - Clear graduation (approx. 2L) on bag for an easier examination and quantification of the effluents
 - A cap at the bottom end for an easy emptying of the collector and no risk of splashing (2 ways of opening, with grip for easier emptying)
 - Easy and highly resistant connection between the bag and the flow collector
- Transfer tubing:
 - White 1.5m opaque tube
 - Adjustment of length is possible: tubing cuttable every 30cm
 - 15mm diameter with anti-bending system for an easy drainage of the stoma bag
 - Permanently connected to the distal bag, highly resisting connection to the bag
- Can be connected to following drainable bags:
 - Flexima® High Flow, Flexima® Key Maxi, Flexima® 3S High Flow

Features

Indication

Distal collecting bag for high flow liquid stools (4- 6 litres in 24 hours). This type of flows found in case of derivation jejunostomies also called "short bowels". It can also be done for a limited period of time in ileostomy or colostomy after surgery or chemotherapy.



SUPERFILLER

PROTECTIVE SKIN BARRIER PASTE

SUPERFILLER

PROTECTIVE SKIN BARRIER PASTE



ADVANTAGES:

- Ideal to fill in folds around the uneven peristomal skin surfaces
- Easy to use and spread
- Prevents leakages and irritation

INDICATION:

- Protective skin barrier paste
- Colostomies – Ileostomies – Urostomies – Fistulae
- For uneven peristomal skin surfaces
- Used when leakages occur because skin protectors do not adhere closely to patient's stoma.

COMPOSITION:

- Contains penpure 70
- Alcohol

HOW TO APPLY:

- 1 Wash your hands and the skin around the stoma.
- 2 Dry both hands and the skin around the stoma carefully.
- 3 Apply some paste around the stoma or directly on the skin protector/ wafer.
- 4 Then apply the skin protector /wafer.



PRODUCT INFORMATION:

Product Description	Size	Product Code
Unit Tube	60g	F05008

Алматы (7273)495-231
Ангарск (3955)60-70-56
Архангельск (8182)63-90-72
Астрахань (8512)99-46-04
Барнаул (3852)73-04-60
Белгород (4722)40-23-64
Благовещенск (4162)22-76-07
Брянск (4832)59-03-52
Владивосток (423)249-28-31
Владикавказ (8672)28-90-48
Владимир (4922)49-43-18
Волгоград (844)278-03-48
Вологда (8172)26-41-59
Воронеж (473)204-51-73
Екатеринбург (343)384-55-89

Иваново (4932)77-34-06
Ижевск (3412)26-03-58
Иркутск (395)279-98-46
Казань (843)206-01-48
Калининград (4012)72-03-81
Калуга (4842)92-23-67
Кемерово (3842)65-04-62
Киров (8332)68-02-04
Коломна (4966)23-41-49
Кострома (4942)77-07-48
Краснодар (861)203-40-90
Красноярск (391)204-63-61
Курск (4712)77-13-04
Курган (3522)50-90-47
Липецк (4742)52-20-81

Магнитогорск (3519)55-03-13
Москва (495)268-04-70
Мурманск (8152)59-64-93
Набережные Челны (8552)20-53-41
Нижний Новгород (831)429-08-12
Новокузнецк (3843)20-46-81
Ноябрьск (3496)41-32-12
Новосибирск (383)227-86-73
Омск (3812)21-46-40
Орел (4862)44-53-42
Оренбург (3532)37-68-04
Пенза (8412)22-31-16
Петрозаводск (8142)55-98-37
Псков (8112)59-10-37

Пермь (342)205-81-47
Ростов-на-Дону (863)308-18-15
Рязань (4912)46-61-64
Самара (846)206-03-16
Саранск (8342)22-96-24
Санкт-Петербург (812)309-46-40
Саратов (845)249-38-78
Севастополь (8692)22-31-93
Симферополь (3652)67-13-56
Смоленск (4812)29-41-54
Сочи (862)225-72-31
Ставрополь (8652)20-65-13
Сургут (3462)77-98-35
Сыктывкар (8212)25-95-17
Тамбов (4752)50-40-97

Тверь (4822)63-31-35
Тольятти (8482)63-91-07
Томск (3822)98-41-53
Тула (4872)33-79-87
Тюмень (3452)66-21-18
Ульяновск (8422)24-23-59
Улан-Удэ (3012)59-97-51
Уфа (347)229-48-12
Хабаровск (4212)92-98-04
Чебоксары (8352)28-53-07
Челябинск (351)202-03-61
Череповец (8202)49-02-64
Чита (3022)38-34-83
Якутск (4112)23-90-97
Ярославль (4852)69-52-93

Россия +7(495)268-04-70

Казахстан +7(7172)727-132

Киргизия +996(312)96-26-47

www.bb Braun.nt-rt.ru | | bng@nt-rt.ru